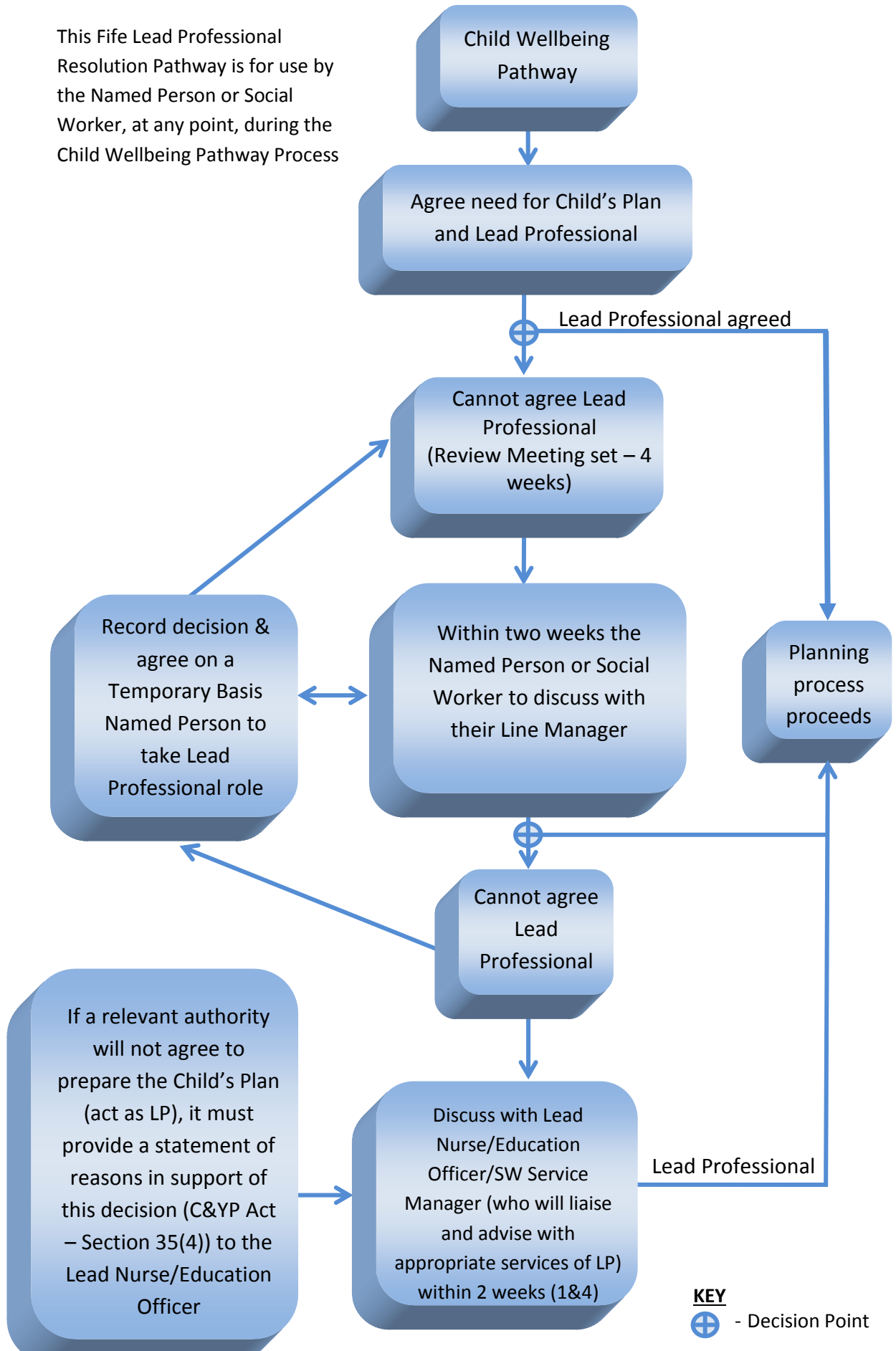


# Fife Lead Professional Resolution Pathway

This Fife Lead Professional Resolution Pathway is for use by the Named Person or Social Worker, at any point, during the Child Wellbeing Pathway Process



**KEY**  
⊕ - Decision Point

Title: Fife Lead Professional Resolution Pathway	Version: Final	Date: June 2016
Author: GIRWG	Page: 1	Review date: tbc